

Y-200 – BC, C and D Filament Singles Yarns



BC, C and D filament yarns are used in further fabrications such as warping and weaving for glass fabrics and tapes.

General Product Specifications

Product Information

Product	ECBC1500		BC1500 DM	ECBC2250	ECBC3000	ECBC3750		ECC1200	
Glass Type	E		E	E	E	E		E	
Filament Diameter - micron	4.0	4.0	4.0	4.0	4.0	4.0	4.0	4.5	4.5
Binder	622	622	622	622	622	622	622	622	622
Bobbin	7636	7636	7636	7636	7636	7636	7636	7636	7636
Plies	1/0	1/0	1/0	1/0	1/0	1/0	1/0	1/0	1/0
Nominal Yield - yd/lb	149,925	149,925	149,925	224,888	299,850	375,000	375,000	119,940	119,940
Tex - g/1000 m	3.3	3.3	3.3	2.2	1.7	1.3	1.3	4.1	4.1
Tex tolerance +/-	0.4	0.4	0.4	0.4	0.4	0.2	0.2	0.4	0.4
Nominal Solids %	1.9	1.9	1.9	2.3	2.25	2.35	2.35	1.7	1.7
Solids Tolerance +/-	0.3	0.3	0.3	0.5	0.5	0.5	0.5	0.3	0.3
Nominal Twist TPI (TPM)	1.0Z (Z40)	0.5Z (Z20)	1.0Z (Z40)	0.7Z (Z28)	0.7Z (Z28)	0.2Z (Z8)	0.5Z (Z20)	1.0Z (Z40)	0.5Z (Z20)
Twist Tolerance +/- TPI (TPM)	0.3 (12)	0.15 (6)	0.3 (12)	0.2 (8)	0.2 (8)	0.15 (6)	0.15 (6)	0.3 (12)	0.15 (6)
Max. Broken Filaments*	10	10	10	10	10	10	10	10	10
Minimum Tensile - lb (N)	0.3	0.3	0.3	0.21	0.15	0.14	0.14	0.4	0.4
Average of 5 tests	(1.4)	(1.4)	(1.4)	(1.0)	(0.7)	(0.6)	(0.6)	(1.8)	(1.8)

*broken filaments based on average 360° check.

Nominal Product Characteristics

(For reference only, not specified or controlled)

Average Bare Glass Tensile - lb (N)*	0.65 (2.7)	0.65 (2.7)	0.65 (2.7)	0.42 (1.9)	0.34 (1.5)	TBD (TBD)	TBD (TBD)	0.76 (3.4)	0.76 (3.4)
Approximate Yarn Diameter - in (mm)	0.0024 (0.061)	0.0024 (0.061)	0.0024 (0.061)	0.0018 (0.450)	0.0012 (0.030)	0.0011 (0.028)	0.0011 (0.028)	0.0030 (0.076)	0.0030 (0.076)

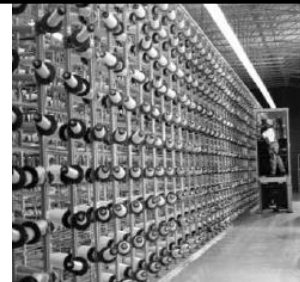
*Reflects average tensile per bobbin

Packaging Information

Bobbin	7636	7636	7636	7636	7636	7636	7636	7636	7636
Package Weight - lb (kg)	2.0 (0.91)	2.0 (0.91)	2.0 (0.91)	1.4 (0.63)	1.5 (0.68)	0.5 (0.23)	0.5 (0.23)	2.0 (0.91)	2.0 (0.91)
Min bobbin Weight - lb (kg)	0.25 (0.11)	0.25 (0.11)	0.25 (0.11)	0.25 (0.11)	0.25 (0.11)	0.25 (0.11)	0.25 (0.11)	0.5 (0.22)	0.5 (0.22)
Metered Bobbin Length - yd (m)	292,000 (267,000)	292,000 (267,000)	292,000 (267,000)	310,000 (283,464)	440,000 (402,336)	182,875 (167,220)	182,875 (167,220)	243,875 (223,000)	243,875 (223,000)
Metered Ratio	70%	70%	70%	50%	50%	70%	70%	80%	80%

Rev 30, 11/27/2018

Y-200 – BC, C and D Filament Singles Yarns



BC, C and D filament yarns are used in further fabrications such as warping and weaving for glass fabrics and tapes.

General Product Specifications

Product Information

Product	ECD450					ECD450 MM	ECD900		ECD900 MM		ECD1800
	E					E	E		E		E
Glass Type											
Filament Diameter - micron	5.0	5.0	5.0	5.0	5.0	5.0	5.0	5.0	5.0	5.0	5.0
Binder	620-1	620-1	622	622	723	622	620-1	622	620-1	622	620-1
Bobbin	7636	8542	7636	8542	7636	7636	7636	7636	7636	7636	7636
Plies	1/0	1/0	1/0	1/0	1/0	1/0	1/0	1/0	1/0	1/0	1/0
Nominal Yield - yd/lb	44,940	44,940	44,940	44,940	44,940	44,940	89,900	89,900	89,900	89,900	179,900
Tex - g/1000 m	11.0	11.0	11.0	11.0	11.0	11.0	5.5	5.5	5.5	5.5	2.75
Tex tolerance +/-	0.7	0.7	0.7	0.7	0.7	0.7	0.4	0.4	0.4	0.4	0.3
Nominal Solids %	1.75	1.75	1.55	1.55	1.55	1.25	1.93	1.65	2.0	1.5	2.45
Solids Tolerance +/-	0.25	0.25	0.3	0.3	0.3	0.3	0.3	0.3	0.3	0.3	0.6
Nominal Twist TPI (TPM)	1.0Z (Z40)	1.0Z (Z40)	1.0Z (Z40)	1.0Z (Z40)	1.0Z (Z40)	1.0Z (Z40)	1.0Z (Z40)	1.0Z (Z40)	1.0Z (Z40)	1.0Z (Z40)	1.0Z (Z40)
Twist Tolerance +/- TPI (TPM)	0.3 (12)	0.3 (12)	0.3 (12)	0.3 (12)	0.3 (12)	0.3 (12)	0.3 (12)	0.3 (12)	0.3 (12)	0.3 (12)	0.3 (12)
Max. Broken Filaments*	10	10	10	10	10	10	10	10	10	10	10
Minimum Tensile - lb (N)	1.3 (5.8)	1.3 (5.8)	1.3 (5.8)	1.3 (5.8)	1.5 (6.7)	1.3 (5.8)	0.6 (2.7)	0.6 (2.7)	0.6 (2.7)	0.6 (2.7)	0.3 (1.3)

*broken filaments based on average 360° check.

Nominal Product Characteristics

(For reference only, not specified or controlled)

Average Bare Glass Tensile - lb (N)*	1.84 (8.2)	1.84 (8.2)	1.91 (8.5)	1.91 (8.5)	2.1 (9.3)	1.91 (8.5)	0.9 (4.0)	0.9 (4.0)	0.9 (4.0)	0.9 (4.0)	0.5 (2.2)
Approximate Yarn Diameter - in (mm)	0.0048 (0.122)	0.0048 (0.122)	0.0048 (0.122)	0.0048 (0.122)	0.0048 (0.122)	0.0048 (0.122)	0.0033 (0.085)	0.0033 (0.085)	0.0033 (0.085)	0.0033 (0.085)	0.0026 (0.066)

*Reflects average tensile per bobbin

Packaging Information

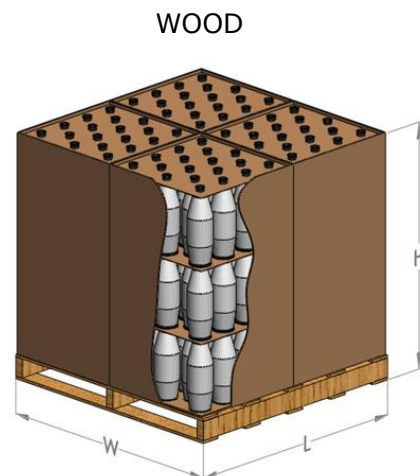
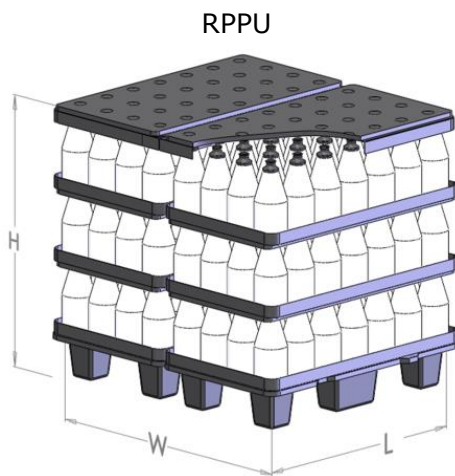
Bobbin	7636	8542	7636	8542	7636	7636	7636	7636	7636	7636	7636
Package Weight - lb (kg)	4.0 (1.8)	4.0 (1.8)	4.0 (1.8)	4.0 (1.8)	4.0 (1.8)	4.0 (1.8)	3.1 (1.41)	3.1 (1.41)	3.1 (1.41)	3.1 (1.41)	2.0 (0.91)
Min bobbin Weight - lb (kg)	2.0 (0.91)	2.0 (0.91)	2.0 (0.91)	2.0 (0.91)	2.0 (0.91)	2.0 (0.91)	1.0 (0.45)	1.0 (0.45)	1.0 (0.45)	1.0 (0.45)	0.25 (0.11)
Metered Bobbin Length - yd (m)	175,000 (160,000)	175,000 (160,000)	175,000 (160,000)	175,000 (160,000)	175,000 (160,000)	175,000 (160,000)	260,000 (237,740)	260,000 (237,740)	260,000 (237,740)	260,000 (237,740)	350,000 (320,040)
Metered Ratio	80%	80%	80%	80%	70%	80%	80%	80%	80%	80%	50%

Rev 30, 11/27/2018

Y-200 – BC, C and D Filament Singles Yarns

Nominal Packaging Dimensions

Bobbin	Pallet	Bobbins / Layer	Layers / Carton	Cartons / Pallet	Bobbins / Pallet	L-in (cm)	W-in (cm)	H-in (cm)
8542	Wood	10	3	4	120	45.5 (115.6)	45.5 (115.6)	46.0 (116.8)
8542	RPPU	28	3	2	168	52 (132.1)	45.5 (115.6)	46.0 (116.8)
7636	Wood	18	3	4	216	45.5 (115.6)	45.5 (115.6)	45.0 (114.3)



Storage, Shelf Life and Handling

Storage and Shelf Life:

AGY recommends storing the materials in accordance with appropriate safety considerations, away from exposure to the elements and at 65-80F (18-27C) and 50-70% humidity. If the materials are stored under these conditions, they are stable, non reactive and will not degrade or exhibit negative characteristics for at least 3 years from the date of manufacture. Unused, unopened product older than this is likely still in good condition, however careful evaluation is recommended. Prior to use, pallets should be placed in the production area and any plastic wrap removed for a minimum of 24 hours to allow the material to acclimate to the processing environment. Special care should be given to pallets being moved from a cold environment into a warm, humid area as condensation may occur and this additional moisture can negatively impact the runability of the material, however, once the material has acclimated, this will no longer be an issue.

For product traceability reasons, the pallet label should be recorded or retained.

Handling:

Fiberglass products process best if temperature and humidity are controlled, primarily because this will help to control the buildup of static electricity, fuzz and fly. AGY recommends that the material be run at 70 +/- 5 degrees F and 60 +/- 5% RH.

Test Methods and Certificates

A copy of test methods and or a certificate of conformity may be issued upon request.

Packages will be firmly and evenly wound on the bobbin, and free from defects in workmanship. AGY accepts no responsibility for damaged material that shows any signs of physical abuse.

For additional product information, refer to PTS M-710

AGY – World Headquarters / Americas

2556 Wagener Road
Aiken, South Carolina, USA 29801
Phone: +(1) 888.434.0945 (toll free)
+(1) 803.643.1501
Fax: +(1) 803.643.1180
Email: asktheexpert@agy.com

AGY – Europe

Le Gemellyon Nord
57 Boulevard Marius Vivier Merle
69003 Lyon, France
Phone: +(33) 4727 81775
Fax: +(33) 4727 81780

www.agy.com

AGY – Asia

Phone: +(86) 21 3251 3871